



Display Modules (DL-DM) HOWTO Change The Button Color

PART NUMBER:

H2102

VERSION:

1.0

Revision Status

Revision	Date	Part Number	Description
1.0	2015-05-05	H2102	Initial release

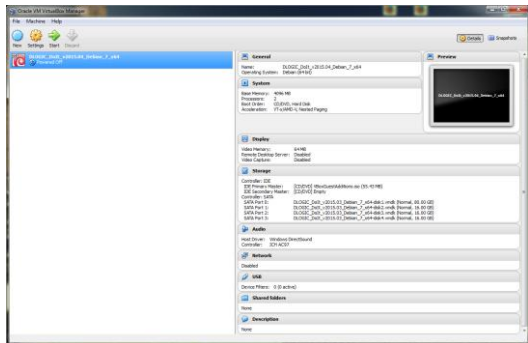
Table of Contents

1. <i>Introduction</i>	4
2. <i>HowTo Change the Button Color</i>	4

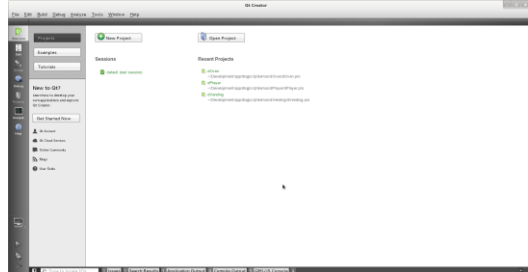
1. Introduction

This note describes how the dOven demo application button color may be changed!

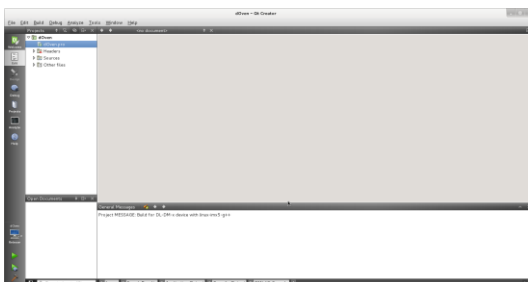
2. HowTo Change the Button Color



- Start the Developer VM
- If log-in is required:
User: dlogic
Password: dlogic



- Run the QT development IDE QtCreator from the top menu bar
- Applications =>
Programming =>
Qt Creator

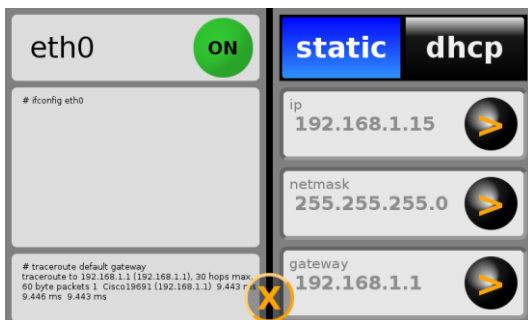


- Launch the dOven demo application project from the recent projects list
- Alternatively select the Open Project button and navigate to:

```

/Development
 /app
 /dlogic
 /qt
 /demos
 /dOven
    
```

Select the dOven.pro file and press the Open button

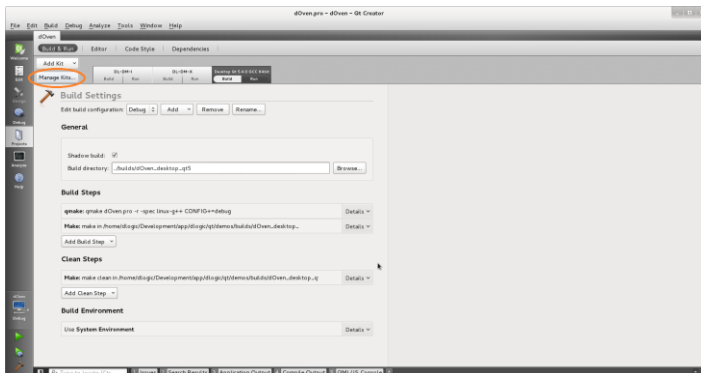


- Check your DM device IP address
- Run the Network application on the device

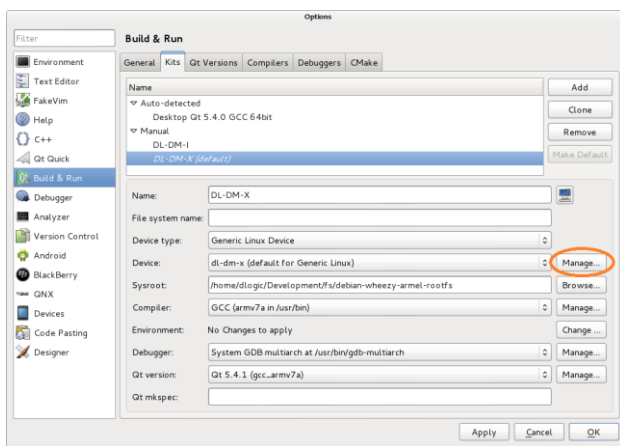
or

Connect a terminal to the console serial port and run the `ifconfig` command

- Ensure the device configuration in QtCreator matches your device IP



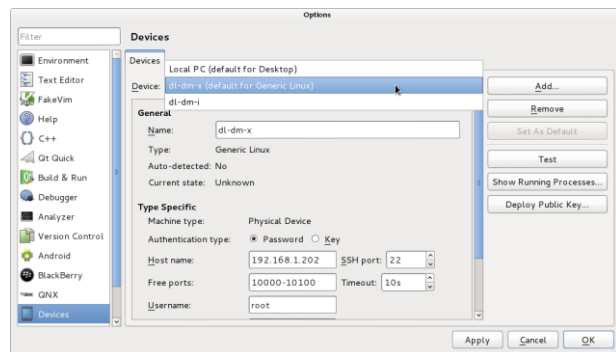
- If required change the QtCreator target device IP address configuration
- Select the Projects icon
- Select the **Manage Kits . . .** button



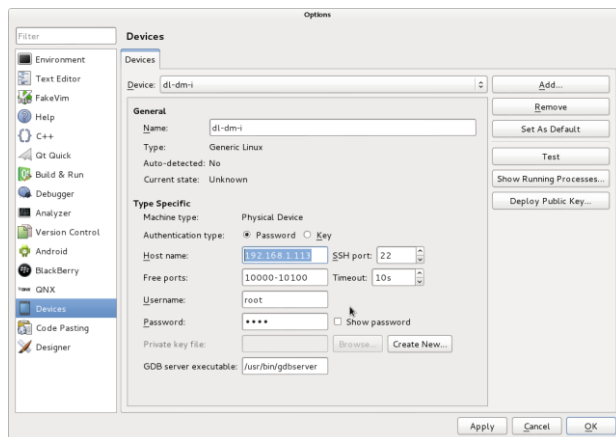
- Select the appropriate target device kit

DL-DM-I i-series DM
DL-DM-X x-series DM

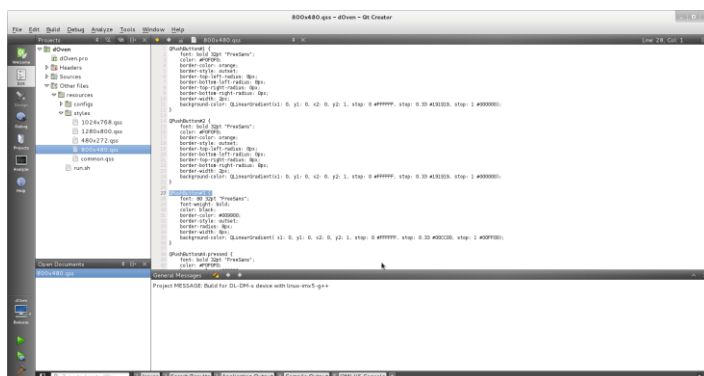
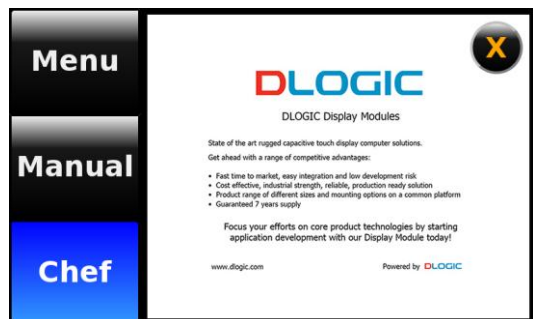
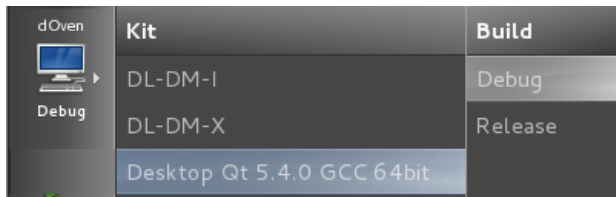
- Select the **Device Manage . . .** button



- Ensure that the appropriate target device kit has been selected, and re-select as necessary



- Update the Device IP address configuration to correspond with the IP address of the DM used for development
- Select Apply + Ok



- Run the dOven project on the device
- Select the appropriate i-/x-series target device (DL-DM-I or DL-DM-X) for the build/run configuration
- Build & run (press play button)
- The dOven application running on the target device

- Check the Manual view
- Green Start button

- Exit the dOven application
- Press the X button

- Make Manual view Start button color change
- Navigate to source code controlling color in Projects pane:

```

/dOven
/Other files
/resources
/styles
    
```

- Open the file: 800x480.qss

```
QPushButton#3 {  
    font: 80 32pt "FreeSans";  
    font-weight: bold;  
    color: black;  
    border-color: #009900;  
    border-style: outset;  
    border-radius: 8px;  
    border-width: 6px;  
    background-color: QlinearGradient( ...  
}
```

- Find the Start button style definition

- Change the `background-color` color definition line:

From:

```
background-color: QlinearGradient(x1: 0, y1: 0, x2: 0, y2: 1, stop: 0 #FFFFFF, stop: 0.33 #00CC00,  
stop: 1 #00FF00);
```

To:

```
background-color: QlinearGradient(x1: 0, y1: 0, x2: 0, y2: 1, stop: 0 #FFFFFF, stop: 0.33 #CC0000,  
stop: 1 #FF0000);
```

- Save the changed file <CTRL>S or use the menu File => Save All



- Build & run (press play button)

- The resulting red button

