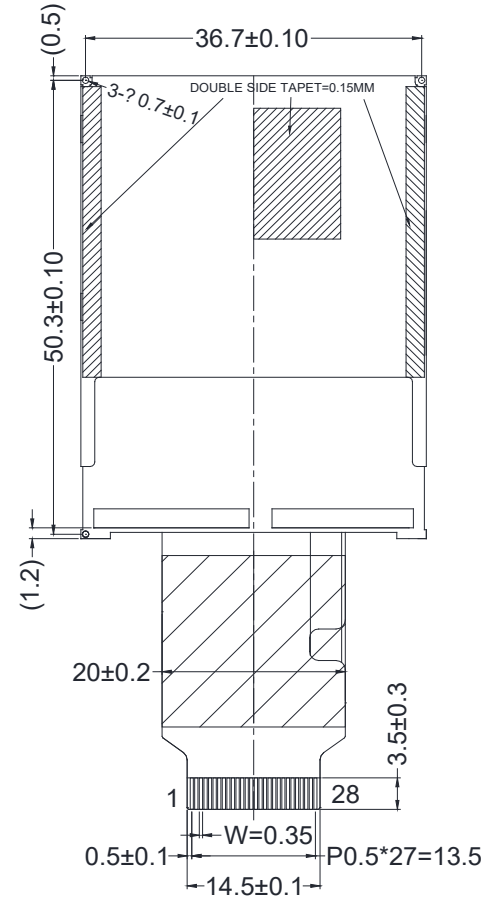
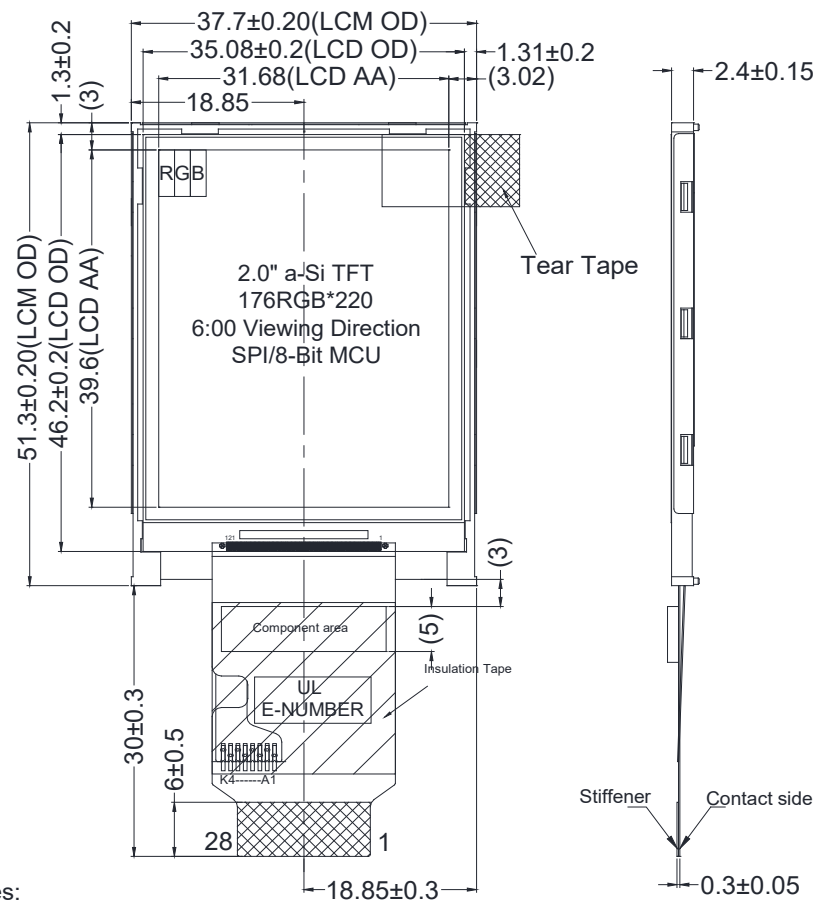


Mechanical Dimensions

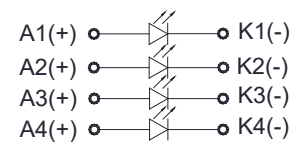


LCM

PIN	Define
1	GND
2	DB7(DB17)
3	DB6(DB16)
4	DB5(DB15)
5	DB4(DB14)
6	DB3(DB13)
7	DB2(DB12)
8	DB1(DB11)
9	DB0(DB10)
10	VCC
11	/RD
12	/WR/SCL
13	SDA
14	RS(A0)
15	/CS
16	/RESET
17	IM2
18	IM1
19	IM0
20	GND
21	LED_A1
22	LED_A2
23	LED_A3
24	LED_A4
25	LED_K1
26	LED_K2
27	LED_K3
28	LED_K4

Notes:

1. Display size: 2.0" TN TFT
2. Viewing direction: 6:00 O'Clock  
Grayscale Inversion Direction: 12:00 O'Clock
3. Display mode: Transmissive/Normal White
4. Operating temperature: -20°C~+70°C
5. Storage temperature: -30°C~+80°C
6. Backlight: White(4LEDs)/3.0V/80mA(Typ)  
Brightness: 650 cd/m<sup>2</sup>(Typ)
7. Power supply voltage: 3.0V (LI19225G)
8. RoHS compliant
9. General tolerance: ±0.3mm



Backlight Circuit Diagram

**LOGIC TECHNOLOGIES**

Part Number	Revision
LTTD176220020-L3	A
Not to scale. Unit mm.	Sheet: 1/1