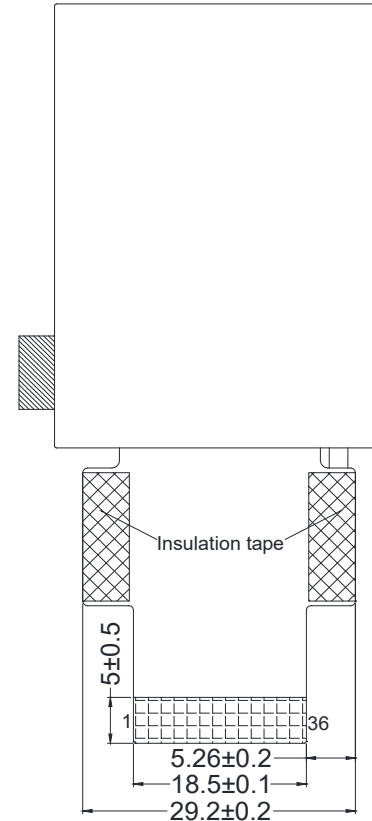
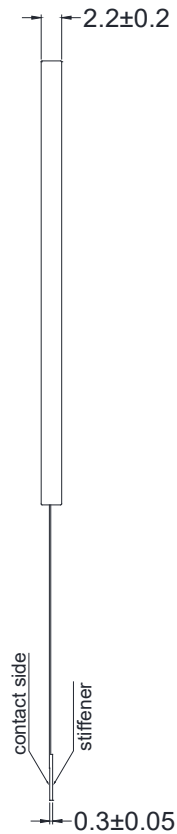
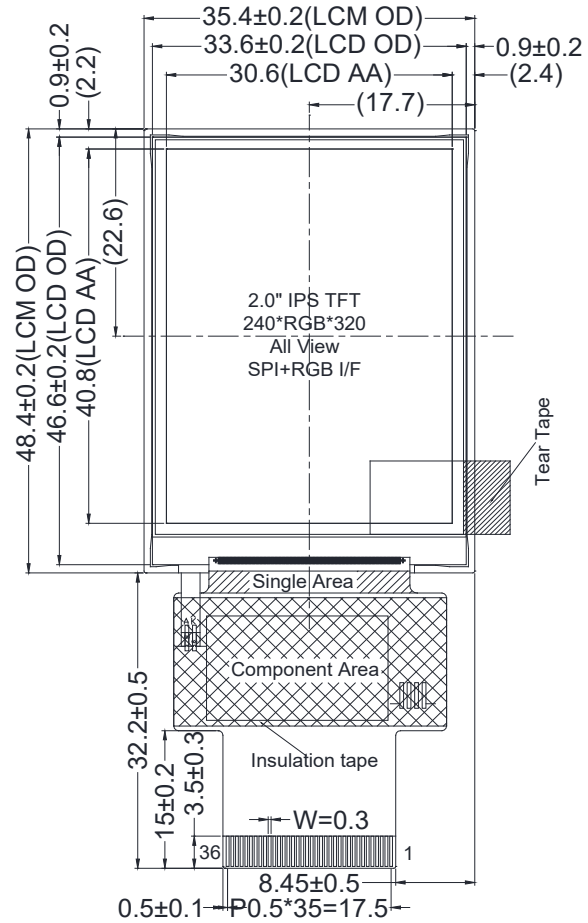


Mechanical Dimensions

First Release

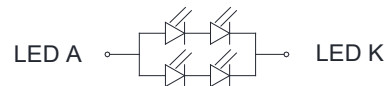


LCM

PIN	SYMBOL	PIN	SYMBOL
1	NC(XR)	19	DB4
2	NC(YD)	20	DB5
3	NC(XL)	21	DB6
4	NC(YU)	22	DB7
5	RESX	23	DB8
6	CS	24	DB9
7	SCL	25	DB10
8	VSYNC	26	DB11
9	HSYNC	27	DB12
10	ENABLE	28	DB13
11	GND	29	DB14
12	DOTCLK	30	DB15
13	GND	31	DB16
14	SDA	32	DB17
15	DB0	33	VCC
16	DB1	34	GND
17	DB2	35	LEDK
18	DB3	36	LEDA

Notes:

1. Display size: 2.0" IPS TFT
2. Viewing direction: All
3. Display mode: Transmissive/Normal Black
4. Operating temperature: -20°C~+70°C
5. Storage temperature: -30°C~+80°C
6. Backlight: White(4LEDs)/6.4V/40mA(Typ)
Brightness: 580 cd/m²(Typ)
7. Power supply voltage: 3.0V (ST7789V)
8. RoHS compliant
9. General tolerance: ±0.3mm



Backlight Circuit Diagram

LOGIC TECHNOLOGIES

Part Number	Revision
LTTD240320020-L3	A
Not to scale. Unit mm.	Sheet: 1/1