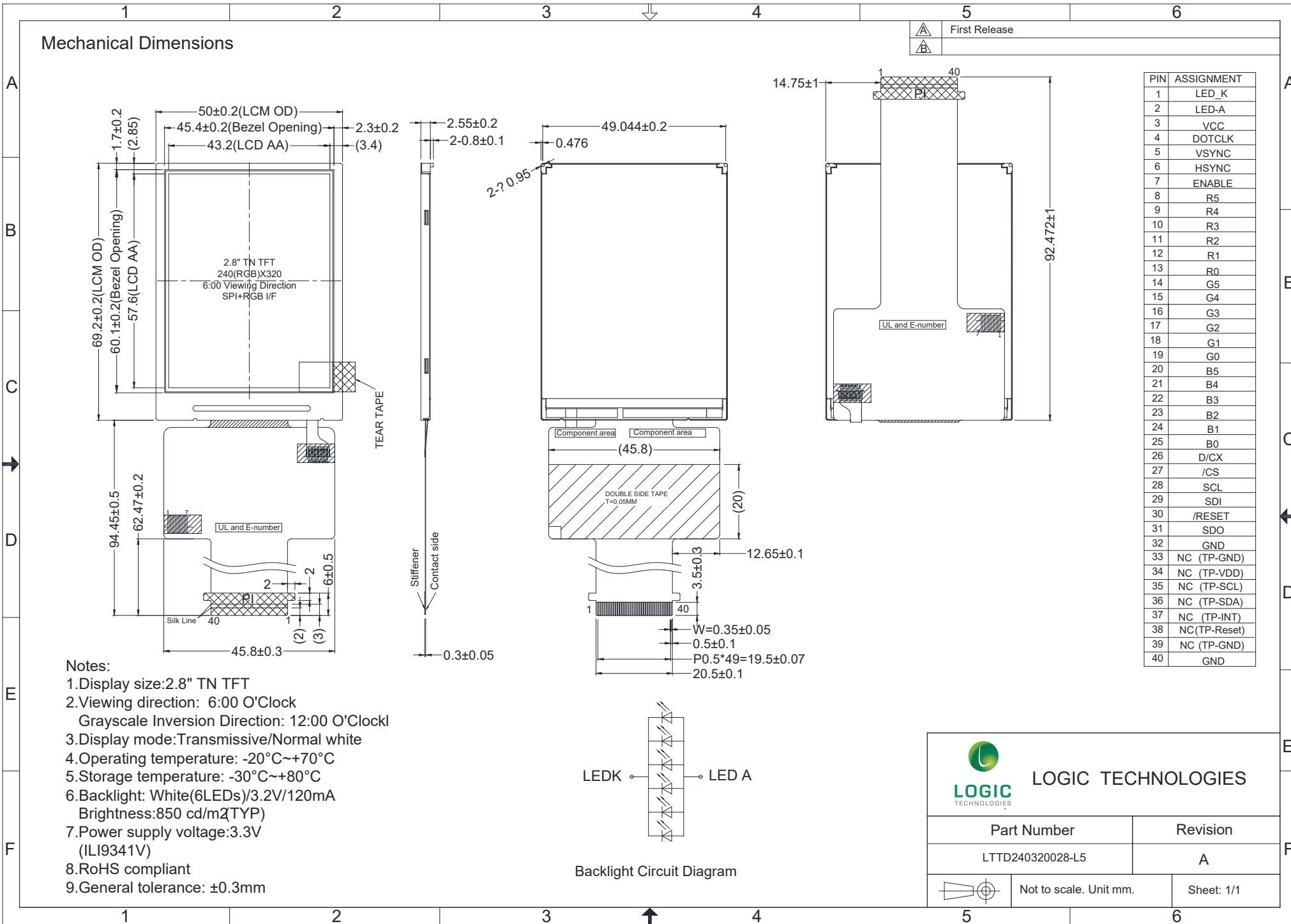
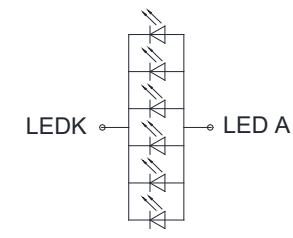


Mechanical Dimensions




PIN	ASSIGNMENT
1	LED_K
2	LED-A
3	VCC
4	DOTCLK
5	VSYNC
6	HSYNC
7	ENABLE
8	R5
9	R4
10	R3
11	R2
12	R1
13	R0
14	G5
15	G4
16	G3
17	G2
18	G1
19	G0
20	B5
21	B4
22	B3
23	B2
24	B1
25	B0
26	D/CX
27	/CS
28	SCL
29	SDI
30	/RESET
31	SDO
32	GND
33	NC (TP-GND)
34	NC (TP-VDD)
35	NC (TP-SCL)
36	NC (TP-SDA)
37	NC (TP-INT)
38	NC(TP-Reset)
39	NC (TP-GND)
40	GND


- Notes:
1. Display size: 2.8" TN TFT
 2. Viewing direction: 6:00 O'Clock
Grayscale Inversion Direction: 12:00 O'Clock
 3. Display mode: Transmissive/Normal white
 4. Operating temperature: -20°C~+70°C
 5. Storage temperature: -30°C~+80°C
 6. Backlight: White(6LEDs)/3.2V/120mA
Brightness: 850 cd/m²(TYP)
 7. Power supply voltage: 3.3V (ILI9341V)
 8. RoHS compliant
 9. General tolerance: ±0.3mm



Backlight Circuit Diagram



LOGIC TECHNOLOGIES

Part Number	Revision
LTTD240320028-L5	A
	Not to scale. Unit mm. Sheet: 1/1